

Project

The Madison, London E14

Client/Main Contractor

Balfour Beatty

RC Frame

AJ Morrisroe

Architect

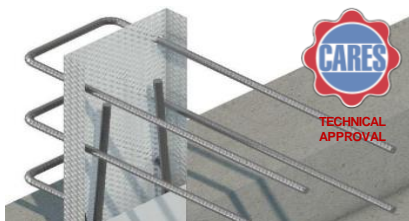
Make Architects

Engineer

WSP

Product(s) supplied

FERBOX® Reinforcement Continuity System



About Invisible Connections

Invisible Connections is the registered trademark of Invisible Connections AS, Norwegian developer of telescopic connection systems used worldwide. The ETA approved connectors solve two key construction applications; 'invisible' connections for precast staircase construction and 'invisible' connections for precast beam construction.

To enhance its offering to the UK market, Invisible Connections Ltd also supplies the CARES approved FERBOX reinforcement continuity system, which is bespoke manufactured for in situ concrete connections.

Our products appeal to precast concrete manufacturers and in situ concrete frame contractors who appreciate the fuss free ease with which precast or In situ elements can be connected.

Invisible Connections Ltd

Unit 6, Thame Forty
Jane Morbey Road
Thame, Oxfordshire OX9 3RR
+44 (0)1844 266000
sales@invisibleconnections.co.uk
invisibleconnections.co.uk



Project description

Rising to 187m, this Marsh Wall landmark is a slender hexagonal glass clad tower. The luxury residential development is adjacent to Canary Wharf in London, E14.

Our role

As a trusted supplier to Morrisroe, Invisible Connections was selected to supply reinforcement continuity strip requirements for the 53 storey superstructure. During early stage construction, we were called upon to produce a bespoke Ferbox design to suit a capping beam to slab interface detail.

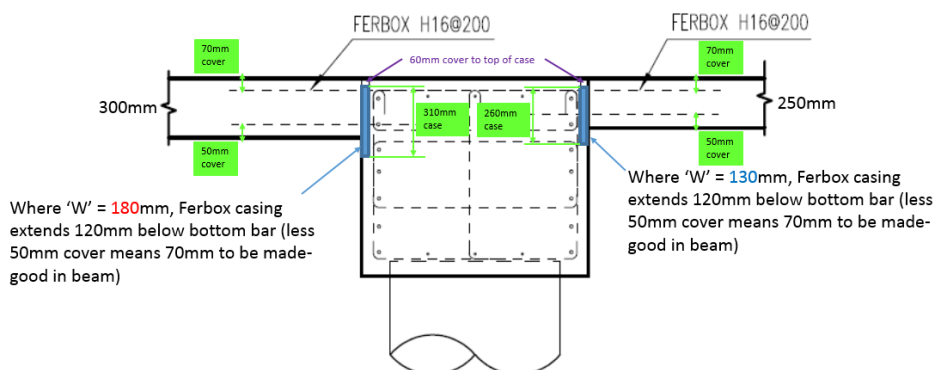
Outcome

We needed to devise a method of accommodating the extra long (1m) 16mm pull-out bars. This aspect was important to the design and could not be compromised. Manufacture using a traditional rebar configuration would not be possible due to the concentration of rebar inside the casing. We therefore manufactured an 'oversized' (width) casing, with bars positioned in an offset arrangement, thus creating the necessary space to accommodate the 1m lap legs.

Product



FERBOX units showing folded pull-out bars within offset casing.



**TYPICAL CONNECTION DETAIL
CAPPING BEAM TO SLAB**