



Enquiry Form

ICL/DTS_BSF/EF/OPT5WX/01/0618

Technical Enquiry Form

DTS Telescopic Connectors

For wall connection loads up to 150 kN ULS each

Please provide below the contact information, project details, dimensions and load data.

Product Range

Telescopic Beam
Connectors

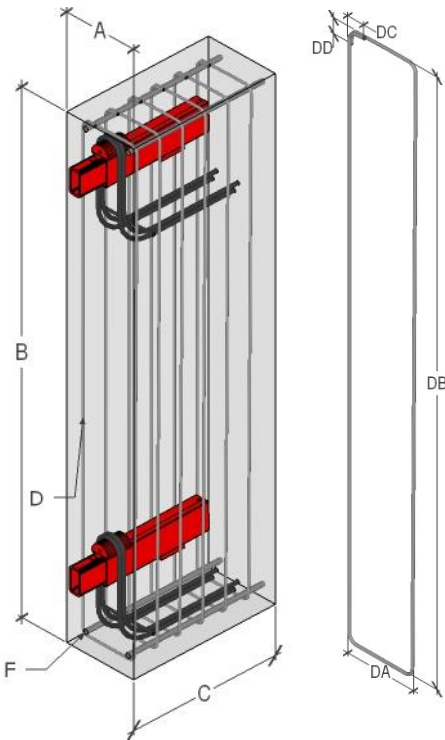
Product Options

DTS 150

Layout Option

Walls with rectangular
cross section

Key to dimensions



For alternative loadings, go to invisibleconnections.co.uk or simply phone us for advice

Invisible Connections Ltd
Unit 6, Thame Forty
Jane Morbey Road
Thame, Oxfordshire OX9 3RR
+44 (0)1844 266000
sales@invisibleconnections.co.uk
invisibleconnections.co.uk

Contact and project details

Contact name
Company
Telephone
Email
Project name
Project location
Main contractor.....
Precaster
Precast element reference
Drawing number(s)
Casting start date (estimate)
Casting end date (estimate).....

Dimensions

See A-F on image to left. Please dimension in mm.

A Beam width
B Beam height
C Beam length
D Link shape (51) (Dia.mm)
(DA.....mm)(DB.....mm)(DC.....mm)(DD.....mm)
E Link centres
F Bar dia.

Load data

(Example)

Total load through each connection(140 kN)

Using the above information we will conduct an initial assessment of the application and advise suitable product selection, supported by calculations as required.

Please email completed enquiry form and any supporting drawings to technical@invisibleconnections.co.uk

For technical and practical advice call +44 (0)1844 266000